

A Descriptive Analysis of SOGI Items

How would you describe yourself?

- Asexual
- Bisexual
- Gay
- Heterosexual or Straight
- Lesbian
- Man loving man
- Pansexual
- Queer
- Questioning
- Woman loving woman
- Self-identify (open)
- Prefer not to say

FRAMING THE
ISSUE



Scout, Deputy Director
National LGBT Cancer Network

One of eight CDC-funded tobacco-related cancer disparity networks.

national
lgbt
cancer
network

ADVOCATING FOR HEALTH EQUALITY

Why interested in BRFSS?

1. Funded by CDC as one of 8 tobacco and cancer disparity networks.
2. Mission: to support states, federal agencies, and national organizations working on these issues.
3. One of our workplan objectives is to increase data collection/use.

lgbt national
cancer
network

TOBACCO RELATED
CANCER PROJECT

FRAMING THE
ISSUE

national
lgbt
cancer
network

ADVOCATING FOR HEALTH EQUALITY

FRAMING THE ISSUE

national
lgbt
cancer
network

ADVOCATING FOR HEALTH EQUALITY

How would you describe yourself?

- Man
- Woman
- Genderqueer
- Gender non-conforming
- Non-binary
- Agender
- Pangender
- Self-identify (Open)
- Prefer not to say

My History

1. MN first asked me to cognitively test a proposed measure in 2008.
2. Arranged 30k field testing of same item.
3. Co-author of NIH LGBT of color sampling report.
4. Working with Office of Minority Health to add measures to NHIS.
5. And with NCHS as they tested measures.
6. Co-chaired the GI report from Williams Institute.
7. NIH Council of Councils.

GETTING TO
KNOW YOU

WE PROVIDE FREE TA TO EXPAND SOGI
DATA COLLECTION & USE

national
lgbt
cancer
network

ADVOCATING FOR HEALTH EQUALITY

BRFSS Spreadsheet

| Alabama | Alaska | Arizona | Arkansas | California | Colorado | Connecticut | Delaware | District of Columbia | Florida | Georgia | Hawaii | Idaho | Illinois | Indiana | Iowa | Kansas | Kentucky | Louisiana | Maine | Maryland | Massachusetts | Michigan | Minnesota | Mississippi |
|---------|--------|---------|----------|------------|----------|-------------|----------|----------------------|---------|---------|--------|-------|----------|---------|------|--------|----------|-----------|-------|----------|---------------|----------|-----------|-------------|
| | I | I | | I | I | | | | | | I | | | | | | | | I | | IBT | | | |
| | I | I | | I | I | | | I | | | I | IT | | IT | | | | | I | | IBT | I | | |
| | I | I | | I | I | | | I | I | | I | IT | IT | | IT | | | | I | | IBT | I | | |
| | I | | | I | I | | | I | I | | | | IT | | | | | | I | | IT | I | | |
| | I | | | I | I | | IT | | | IT | IT | IT | IT | IT | IT | IT | IT | IT | I | IT | IT | I | IT | |
| | I | | | I | IT | IT | IT | | | IT | IT | IT | IT | IT | IT | IT | | | I | IT | IT | IT | IT | |
| | I | | | IT | I | IT | IT | | IT | IT | IT | | IT | IT | IT | | IT | IT | | | IT | IT | IT | IT |
| | IT | IT | | IT | IT | IT | IT | | | IT | IT | IT | | IT | | | | IT | | IT | | IT | IT | IT |
| | | IT | | IT | | IT | IT | | | | | | | | | | | IT | | IT | | IT | | IT |
| | 10 | 6 | | 14 | 13 | 5 | 6 | 7 | 3 | 5 | 10 | 6 | 6 | 7 | 5 | 2 | 2 | 5 | 13 | 4 | 17 | 10 | 5 | |
| | | | | | | 3 | | | 1 | | | | 2 | | | | | | | | 13 | | | |
| | | 2 | | | 2 | 5 | 6 | | | 5 | 5 | 6 | 6 | 6 | 5 | 2 | 2 | 5 | 1 | 4 | 11 | 5 | 5 | |

FRAMING THE ISSUE

national
lgbt
cancer
network

ADVOCATING FOR HEALTH EQUALITY

BRFSS Spreadsheet

| | Missouri | Montana | Nebraska | Nevada | Rampshire | New Jersey | New Mexico | New York | North Carolina | North Dakota | Ohio | Oklahoma | Oregon | Pennsylvania | Rhode Island | South Carolina | South Dakota | Tennessee | Texas | Utah | Vermont | Virginia | Washington | West Virginia | Wisconsin | Wyoming |
|--|----------|---------|----------|--------|-----------|------------|------------|----------|----------------|--------------|------|----------|--------|--------------|--------------|----------------|--------------|-----------|-------|------|---------|----------|------------|---------------|-----------|---------|
| | | I | | | | | IT | | B | I | | | I | | | | | | B | | | | IB | | IB | |
| | | I | | | | | IT | B | I | I | IT | | | | | | | | | I | | | | | | |
| | | I | | | | | IT | | I | I | IT | | I | | | | | | | I | B | | | | | |
| | | I | | | | | IT | | I | | IT | | I | | I | | | | B | I | | | | | | |
| | | IT | | IT | | IT | I | IT | I | | IT | | I | IT | I | | | IT | | I | IT | IT | | | IT | IT |
| | IT | | | IT | | IT | I | IT | I | | IT | | I | IT | I | | | | IT | I | | | IT | | IT | IT |
| | IT | | | IT | | IT | I | IT | I | | IT | | I | IT | IT | | | | IT | I | | IT | IT | | IT | IT |
| | | IT | | IT | | IT | IT | IT | IT | | IT | IT | | IT | IT | IT | | | IT | IT | IT | IT | IT | IT | | IT |
| | IT | | | IT | | | | IT | IT | | | IT | I | | IT | | | IT | IT | IT | IT | IT | IT | | | |
| | | IT | | | | IT | | IT | | | | IT | I | | IT | | | IT | | IT | IT | | IT | | | |
| | | | | | | | | | | | | | | | | | | | | | | | | | | |
| | 4 | 7 | | 5 | | 4 | 13 | 12 | 8 | 9 | 8 | | 16 | 5 | 7 | 1 | | | 4 | 9 | 7 | 5 | 12 | 1 | 8 | 2 |
| | | | | | | | 8 | 2 | | | | | 4 | 2 | | | | | 3 | | 11 | | 2 | | 4 | |
| | 3 | 3 | | 5 | | 4 | 7 | 6 | 2 | | 8 | | | 5 | 4 | 1 | | | 4 | | 8 | 5 | | 1 | 4 | 2 |

FRAMING THE ISSUE

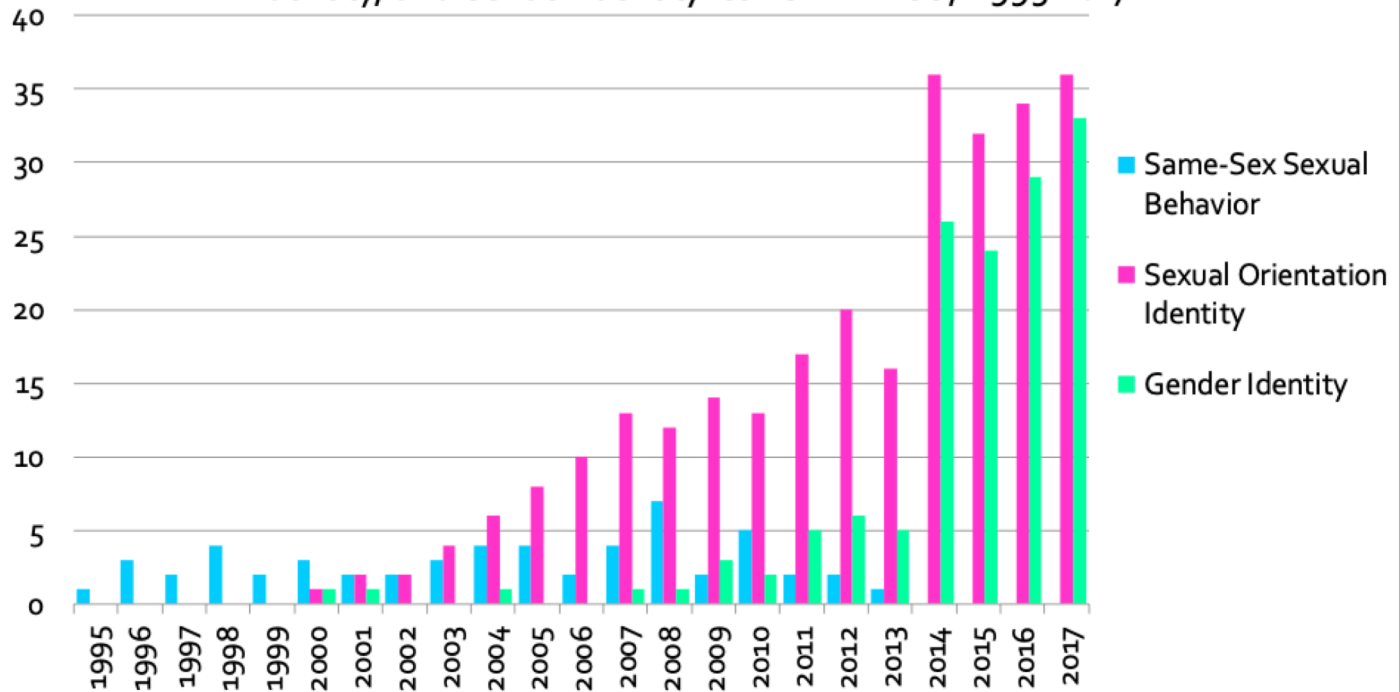
national
lgbt
cancer
network

ADVOCATING FOR HEALTH EQUALITY

SOGI Adoption

FRAMING THE
ISSUE

Number of States with Same-Sex Sexual Behavior, Sexual Orientation Identity, and Gender Identity Items in BRFSS, 1995-2017

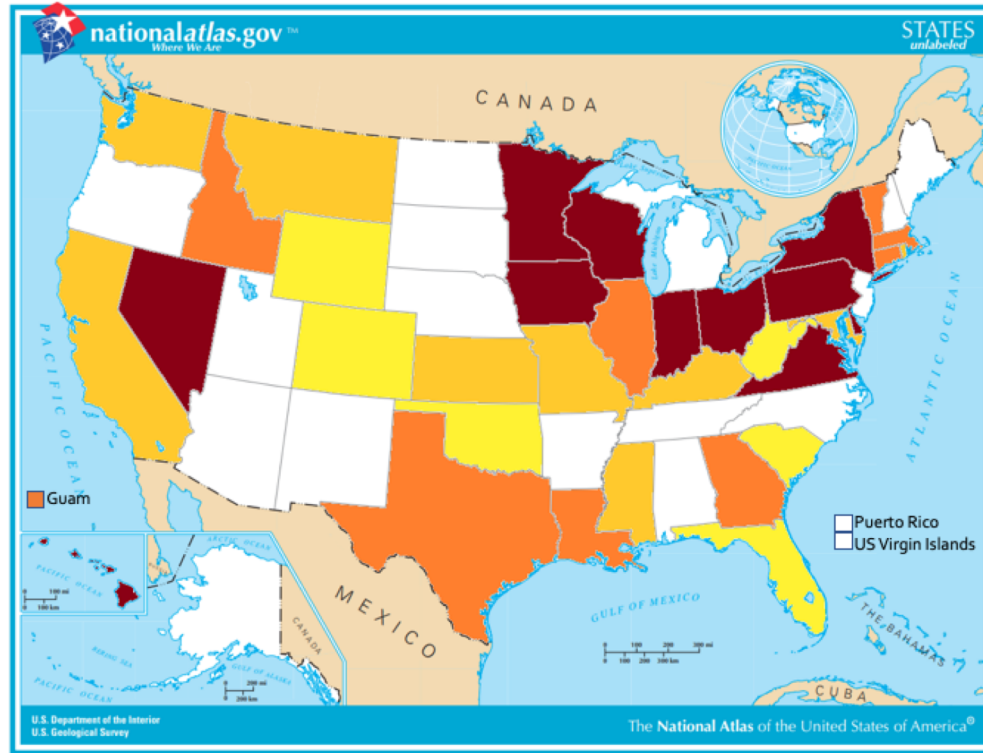


SOGI Consistency

FRAMING THE ISSUE

**national
lgbt
cancer
network**

ADVOCATING FOR HEALTH EQUALITY



States Fielding the Standard
Optional BRFSS SOGI Module,
2014-2017

- 1 year
- 2 years
- 3 years
- 4 years

Shifting awareness

| | | | |
|---------------|---|----------|--|
| M21.02 | Do you consider yourself to be transgender? | TRNSGNDR | 1 Yes, Transgender, male-to-female 2 Yes, Transgender, female to male 3 Yes, Transgender, gender nonconforming 4 No |
|---------------|---|----------|--|

GETTING TO
KNOW YOU

national
lgbt
cancer
network

ADVOCATING FOR HEALTH EQUALITY

GETTING TO
KNOW YOU

national
lgbt
cancer
network

ADVOCATING FOR HEALTH EQUALITY



The Caitlyn Jenner Effect
April 2015

Shifting demographics

FRAMING THE ISSUE

U.S. Adults Identifying as LGBT, 2012-2017

Do you, personally, identify as lesbian, gay, bisexual or transgender?

| | 2012 | 2013 | 2014 | 2015 | 2016 | 2017 |
|--------|-------------|-------------|-------------|-------------|-------------|-------------|
| | % | % | % | % | % | % |
| % LGBT | 3.5 | 3.6 | 3.7 | 3.9 | 4.1 | 4.5 |

GALLUP DAILY TRACKING

national
lgbt
cancer
network

ADVOCATING FOR HEALTH EQUALITY

Shifting demographics 14.7M

FRAMING THE
ISSUE



rhode-island

national
lgbt
cancer
network

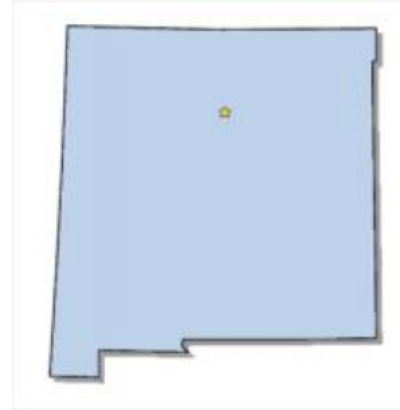
ADVOCATING FOR HEALTH EQUALITY

Shifting demographics

FRAMING THE
ISSUE



rhode-island



new-mexico

national
lgbt
cancer
network

ADVOCATING FOR HEALTH EQUALITY

Shifting demographics

FRAMING THE
ISSUE



rhode-island



new-mexico



georgia

**national
lgbt
cancer
network**

ADVOCATING FOR HEALTH EQUALITY

Shifting demographics

FRAMING THE
ISSUE



rhode-island



new-mexico



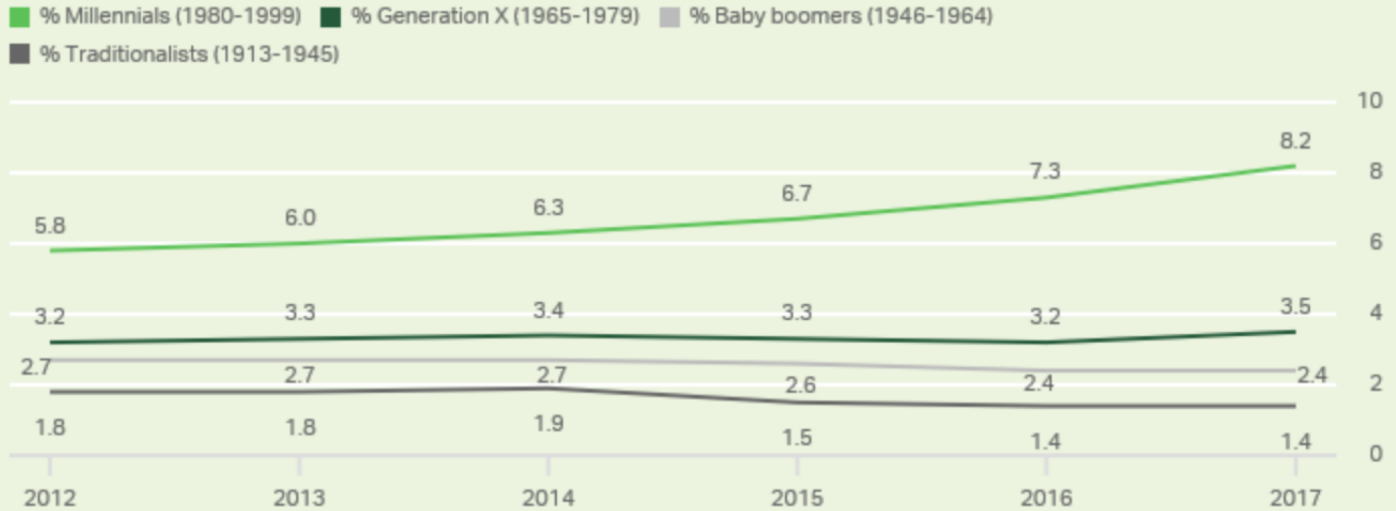
georgia

national
lgbt
cancer
network

ADVOCATING FOR HEALTH EQUALITY

Shifting demographics

Percentage of Americans Identifying as LGBT, by Birth Cohort



GALLUP DAILY TRACKING

FRAMING THE
ISSUE

national
lgbt
cancer
network

ADVOCATING FOR HEALTH EQUALITY

Shifting demographics

The % of millennials saying they are
LGBT identified?

FRAMING THE
ISSUE

national
lgbt
cancer
network

ADVOCATING FOR HEALTH EQUALITY

Shifting demographics

The % of millennials saying they are LGBT identified?

 0.8%/yr

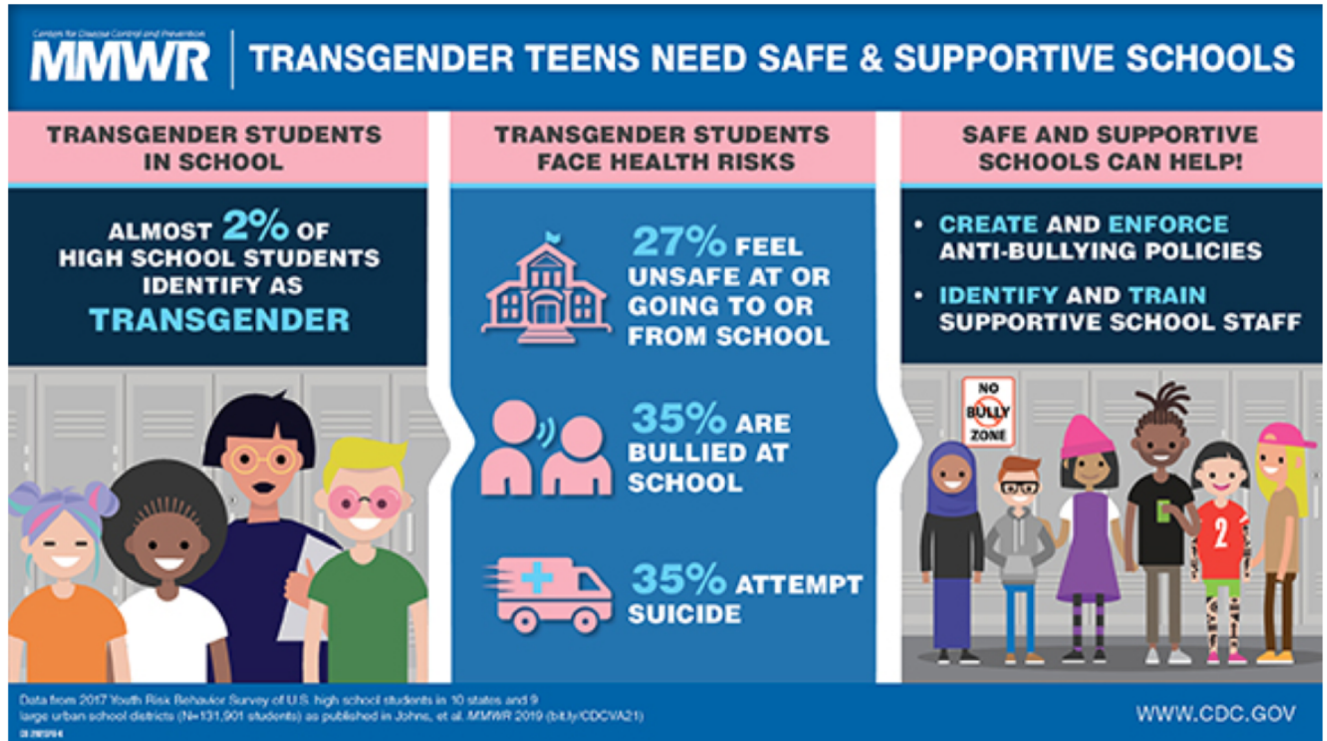
FRAMING THE
ISSUE

national
lgbt
cancer
network

ADVOCATING FOR HEALTH EQUALITY

Shifting demographics

FRAMING THE ISSUE

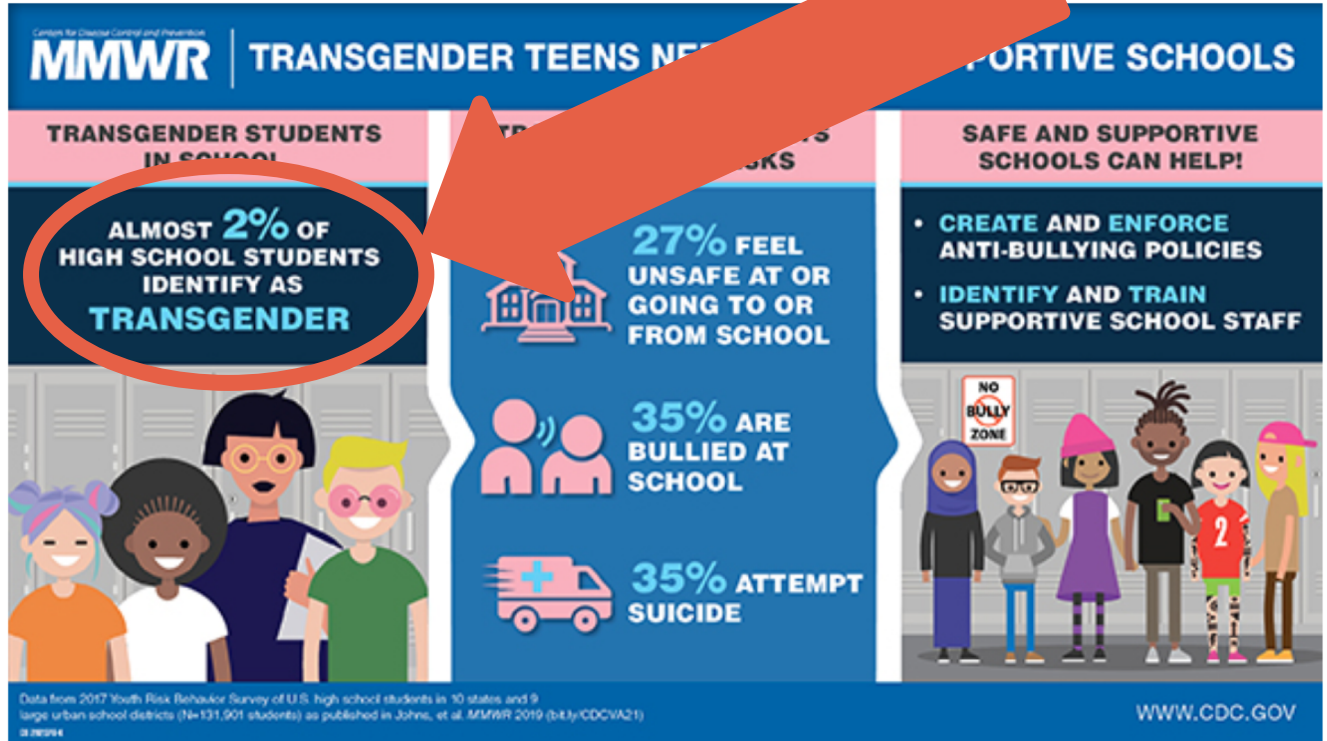


**national
lgbt
cancer
network**

ADVOCATING FOR HEALTH EQUALITY

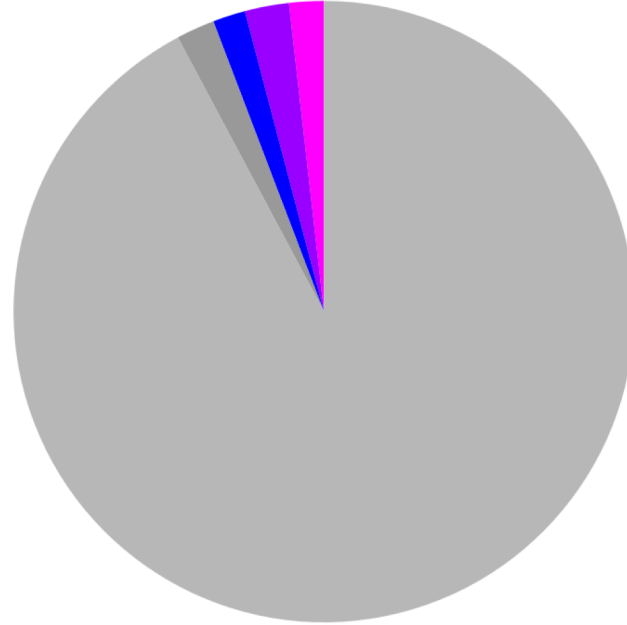
Shifting demographics

FRAMING THE ISSUE



2017 BRFSS

- Heterosexual
- Refused
- Gay/Les
- Bisexual
- Don't Know



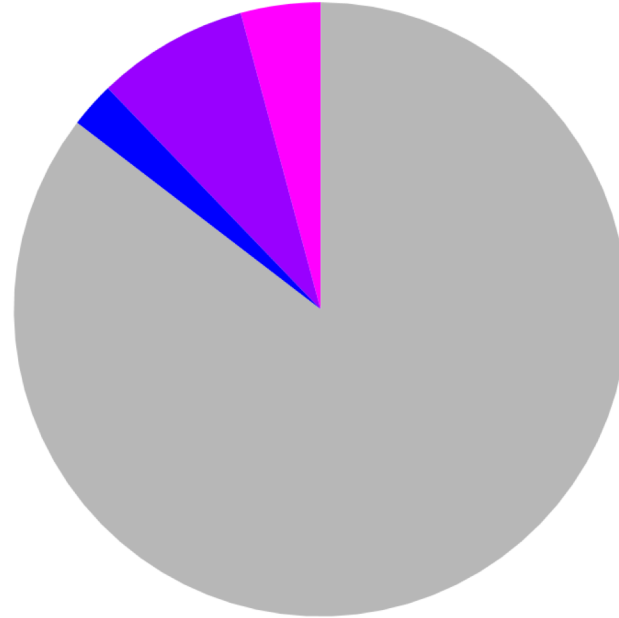
FRAMING THE
ISSUE

national
lgbt
cancer
network

ADVOCATING FOR HEALTH EQUALITY

2017 YRBS

- Heterosexual
- Gay/Les
- Bisexual
- Don't Know



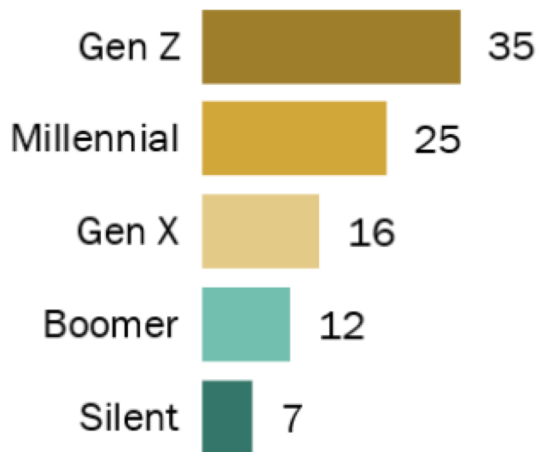
FRAMING THE
ISSUE

national
lgbt
cancer
network

ADVOCATING FOR HEALTH EQUALITY

Gen Z more familiar with gender-neutral pronouns

% saying they personally know someone who prefers that others refer to them using gender-neutral pronouns



Source: Surveys of U.S. adults ages 18 and older conducted Sept. 24-Oct. 7, 2018, and U.S. teens ages 13 to 17 conducted Sept. 17-Nov. 25, 2018.

“Generation Z Looks a Lot Like Millennials on Key Social and Political Issues”

PEW RESEARCH CENTER

**FRAMING THE
ISSUE**

**national
lgbt
cancer
network**

ADVOCATING FOR HEALTH EQUALITY

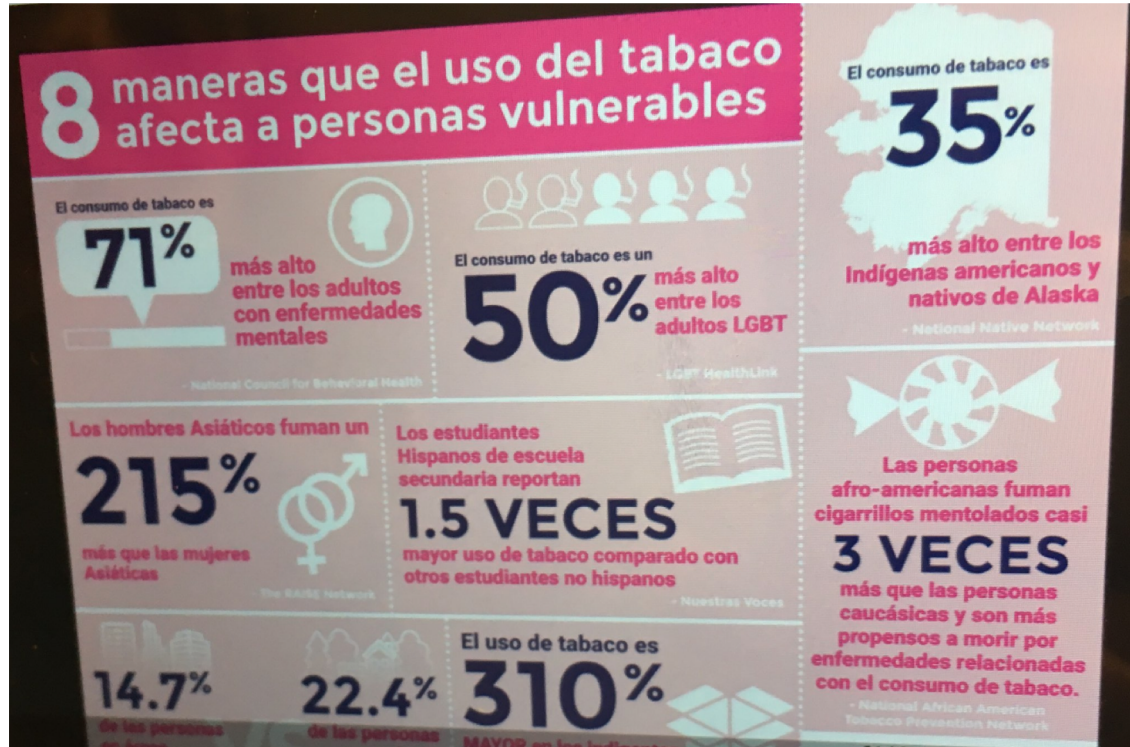
Where will it stop?

There is no way to predict how large the sex- and gender-diverse population will get. But there is evidence that society is changing from the simplicity of male or female.

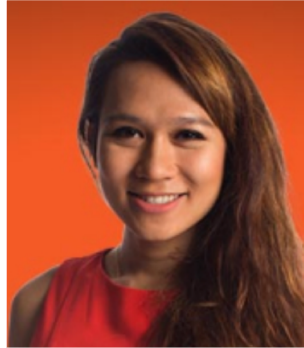
Georgiann Davis is Associate Professor of Sociology at the University of Nevada, Las Vegas.

Data visibility

FRAMING THE ISSUE



FRAMING THE
ISSUE



When you vote, however you vote,
please say why.

Thank you!

Feel free to contact me at scout@cancer-network.org.